



ENSURING PROFESSIONAL WORKFORCE

**IN A MORE INNOVATIVE, AUTOMATED AND
SUSTAINABLE PORT**

Jens Meier, CEO Hamburg Port Authority, President IAPH

Busan International Port Conference (BIPC) | Session: Ports: Success & Future Collaboration

"It is better to light a candle than to curse the darkness."

1

**Automation, Digitalization and
Innovation in our Workforce**

2

**Employee Recruitment
Strategies**

3

**Sustainability through
Automation**



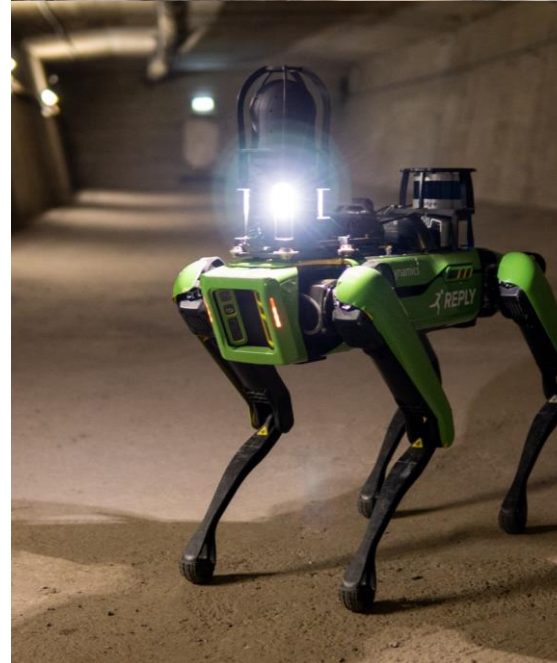
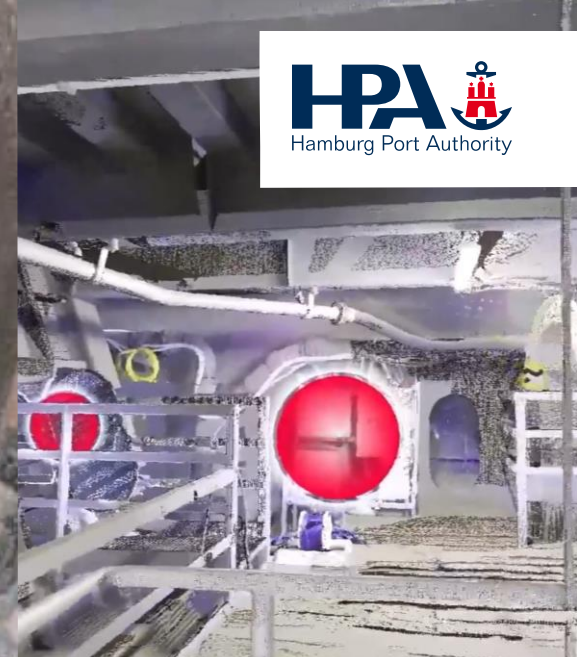
Automation, Digitalization and Innovation in our Workforce

01

How AI, Automation and Robotics Improve Our Daily Work

Digitalization sheds light on unsafe working areas in the port

- Autonomous inspection by robotics
- AR showing damages to the bridge
- AI in use on aerial drones



Employee Recruitment Strategies

02

Developing Opportunities for Employees in a Highly Diversified Work Environment



- Using **modern AI systems** and **automating processes** to ease tasks and make the working environment more attractive

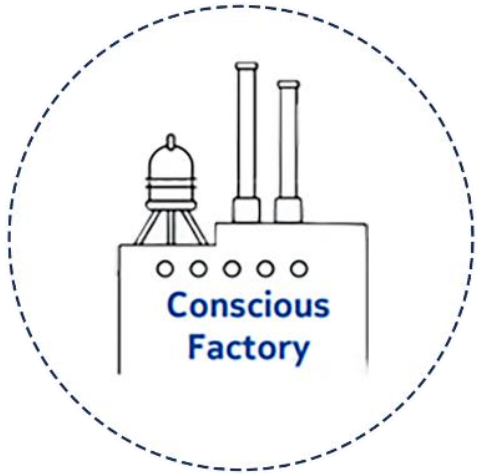
- Promoting **collaboration** and **knowledge exchange** between ports

- Recruiting **young professionals** to strengthen our future and diversified workforce

Sustainability through Automation

03

To manage the future challenges, manufacturing industries require the “conscious” factory



→ It is fully automated – for each and every product / variant

→ Green, agile and flexible. Where needed, when needed

→ Self-learning, data analytics predict risks of deviations

→ Risk countermeasures are automatically put in place in the supply-chain

→ Supply chains combining all data, lead to an integrated information system

The secret of the “conscious factory” lies in big data and an agile supply chain

How Can We Contribute to a More Efficient, Sustainable and Resilient Global Maritime Industry?

- **"Light a candle"** - Innovation as a response to industry challenges
- **Automation & AI** - Tools for workforce efficiency and safety
- **Recruitment strategies** - Embracing diversity and global exchange
- **"Conscious" factories and supply chains** - Integrating data for predictive, responsive systems
- **Collaboration** - Key to driving industry-wide innovation and sustainability





HAMBURG PORT AUTHORITY

Hamburg Port Authority AöR

Jens Meier
Chief Executive Officer

Neuer Wandrahm 4
20457 Hamburg
Tel.: +49 40 42847-2205